

## WS-Flex

Compact focal point system



Optec's WSFlex is a high precision Ultra Short Pulse laser micromachining station in a compact package with multiple configuration options & full CAD compatibility. Superior flexibility makes the system well suited for laser structuring, cutting, milling, drilling on a variety of substrate such as polymers, glass, metal, ceramics... ProcessPower with OptecCAD allows attribution of lasing parameters by layer or by entity, plus full range of processing tools including hatching, helical drilling, slicing, segmentation etc.

### KEY FEATURES

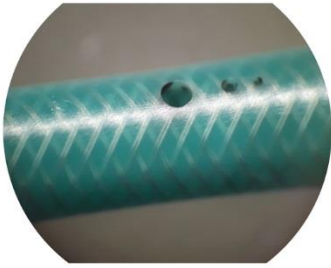
- Motorized X,Y,Z axes
- 200x200mm XY travel range
- 1 $\mu$ m stages resolution
- From 1064 to 355nm wavelength
- Spot size down to 5 $\mu$ m with scanner
- Spot size down to 1 $\mu$ m with fixed lens
- Motorized zoom inspection microscope
- ProcessPower and OptecCAD
- Automatic door opening
- Class 1 laser system (fully interlocked)
- CE certified

### OPTIONS

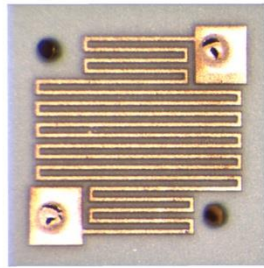
- Rotary Theta stage
- Tube cutting module
- Cutting head
- Mini galvo scanner
- IFOV for extending scan range
- Fume extraction system
- Auto-alignment system for automatic production

### APPLICATIONS

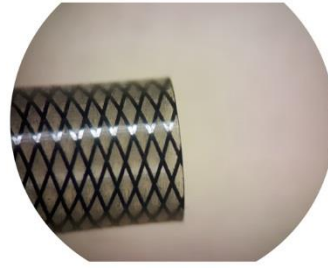
- Cutting, Milling, drilling of a wide range of materials.
- Tube processing
- Composite material cutting
- Scribing
- Surface structuring



Braided catheter drilling



Circuit patterning



Tube cutting



Nitinol tube cutting

### Beam Delivery Unit

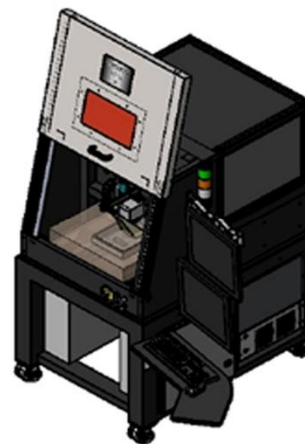
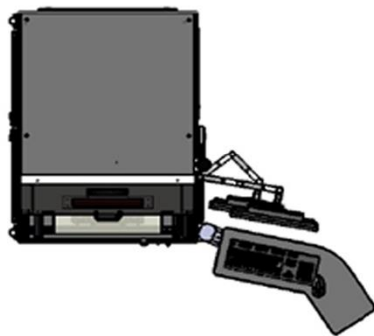
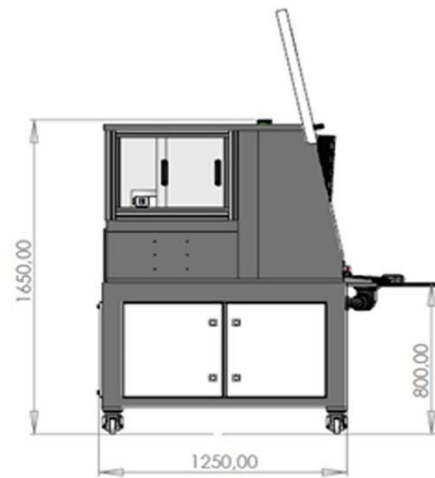
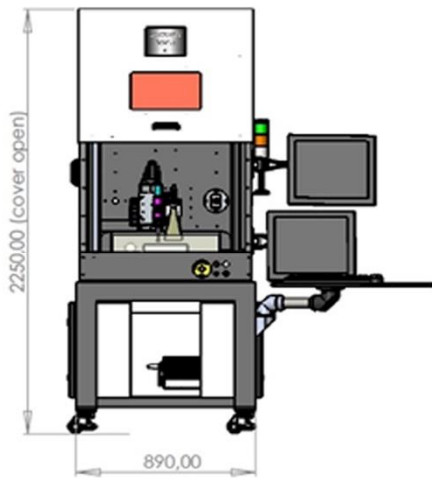
Wavelength	1064/1030nm, 532/515nm or 355/343nm
Focal length	up to 160mm
Scanner area	up to 90x90mm
Minimum Spot size	5µm with scanner (depending on wavelength and Ftheta lens)
Laser type	Femtosecond / nanosecond

### Part Positioning

Travel range	200x200mm
Stage type	Linear motors
Resolution	1µm
Repeatability	1µm
Absolutely accuracy	<2µm with DMC calibration

### Vision systems

Motorized zoom microscope  
with color camera



CE

CLASS 1  
LASER PRODUCT

